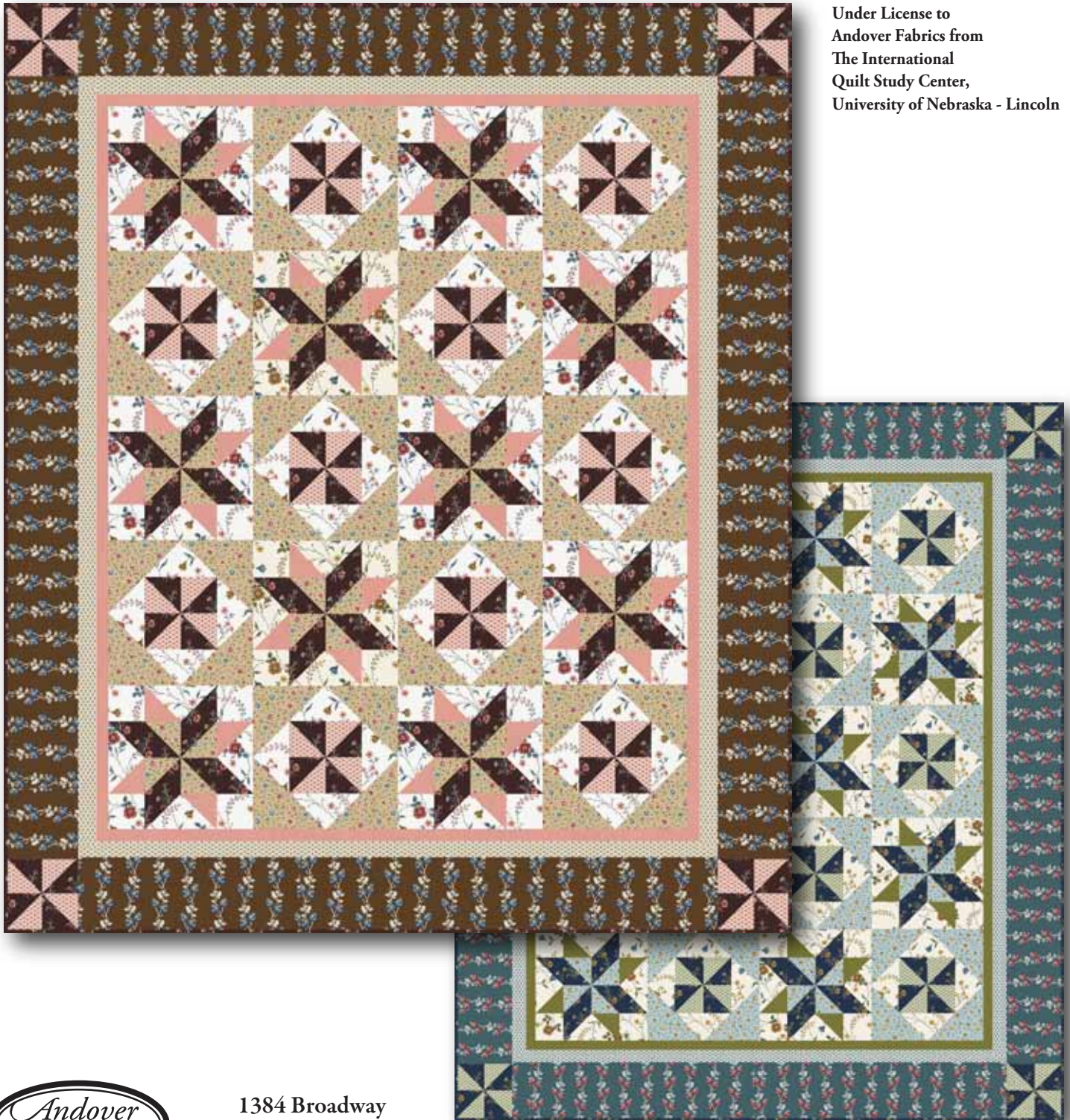


Garden Maze

Fabrics by Kathy Hall with Jo Morton for

The International Quilt Study Center



Under License to
Andover Fabrics from
The International
Quilt Study Center,
University of Nebraska - Lincoln



makower uk

1384 Broadway
New York, NY 10018
(800) 223-5678

www.andoverfabrics.com

Quilt designed by Jean Ann Wright

Quilt size: 65" x 77"

12/22/11

Garden Maze

Fabrics by Kathy Hall with Jo Morton for the
International Quilt Study Center

*Fabrics shown are 20% of actual size.
Fabrics used in featured quilt pattern are indicated in red.*



makower uk www.andoverfabrics.com

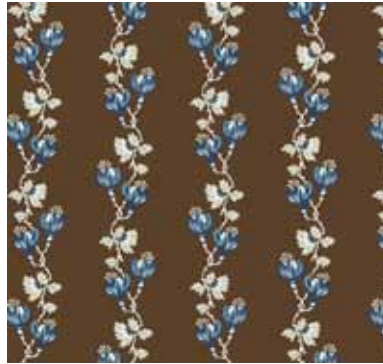
1384 Broadway
New York, NY 10018
(800) 223-5678

Bolts needed to cut project kits				
Brown	Teal	10 kits	20 kits	30 kits
5734-O	5734-T	2	3	4
5735-N	5735-T	2	3	4
5736-N	5736-T	2	3	4
5737-N	5737-T	1	2	3
5738-O	5738-G	1	1	1
5738-N*	5738-T	1	1	1
3940-E	4066-G	1	1	2
Backing Fabric				
*5738-N	5738-T	4	7	10

*Yardage needed for backing (4¾ yards per kit)



5734-O 1¾ yds



5735-N 2 yds



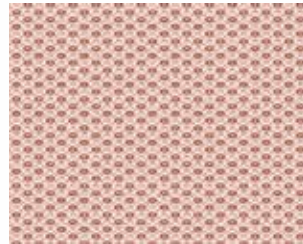
5736-N 1¾ yds (includes binding)



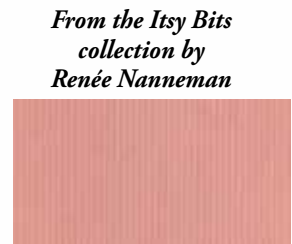
5737-N 1¼ yds



5738-N ½ yd (additional yardage needed for backing)



5738-O ⅜ yd



3940-E ¾ yd

*From the Itsy Bits
collection by
Renée Nanneman*



5734-T



5735-T



5736-T



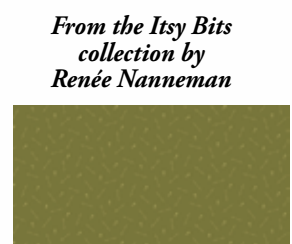
5737-T



5738-T



5738-G



4066-G

*From the Itsy Bits
collection by
Renée Nanneman*